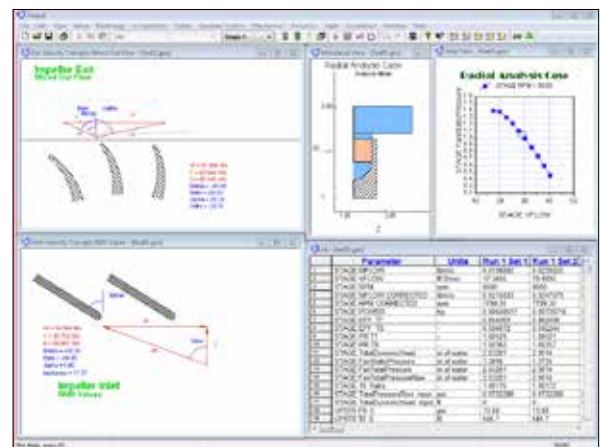


## Preliminary Design Module for Axial, Radial, or Mixed-Flow Fans

# FANPAL™

Perform meanline design optimization for axial, centrifugal, and mixed-flow fans with Concepts NREC's FANPAL™ CAE software program. This meanline approach can be used to rapidly design and analyze single or multiple stages. FANPAL is used to design the fan stage, analyze the performance, refine parameters with data reduction, and model the machine according to several performance models. FANPAL's unique Design Wizard guides the user through all the steps necessary for design, analysis and data reduction. The meanline fan design from FANPAL can easily migrate into the AxCent® program for further blade design and fluid dynamic analysis.



Radial fan design example.

### Components Supported by FANPAL

- Radial or axial inlet guide vanes
- Open or closed impellers
- 2D or 3D impellers
- Front and rear seals
- Diffusers, including: Vaned; Vaneless; Wedge/Channel; Cascade; Conical; 90/180-degree Bends; Foil
- Exit elements, including: Collector; Volute; Return Channel
- Various leakage paths
- Multistage fans

### Integrated Performance Map Plotting

Review design performance, analysis, and test data with performance maps that are flexibly plotted and updated automatically with each geometric change.



Previous generation Holmes High-Velocity Floor Fan (left) compared to quieter and more efficient new design (right).

## Modeling

Radial fans and blowers in FANPAL are supported by the Two-Elements-in-Series (TEIS) rotor diffusion modeling through a two-zone approach. Axial designs are modeled using the famous Koch-Smith method to calculate loss and deviation. Other models are implemented to calculate disk friction, exit mixing, radial and axial stator diffusion/losses, volutes, stall, thrust, and other fluid dynamic aspects of fan performance.

## Easy Editing

View the fan or blower stage in an active, true-scale meridional view. Edit the parameters by double clicking on the component in the meridional view. Also, edit parameters using a single text input/output file, a feature especially useful for optimization.

## Preliminary Mechanical Analysis

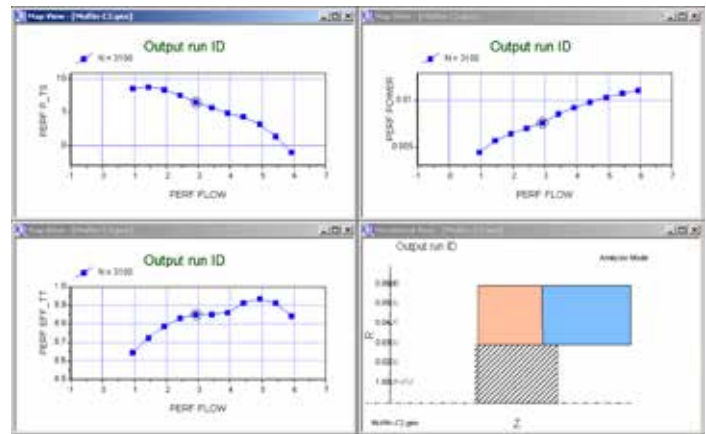
FANPAL provides the user with an initial calculation of the design's mechanical properties. It also estimates stress, vibration, and fatigue limit, and accesses a large database of customizable material properties.

## Axial View with Velocity Triangles

View blades and velocity triangles at the impeller inlet and exit in a window view.

## A Real Fluid program

FANPAL calculates real fluid properties using optional D.B. Robinson Real Fluid Properties, NIST, or ASME steam routines. Users can also incorporate their own proprietary fluid property routines.



*Axial fan design example.*

## OLE Automation Support

Control FANPAL from an external program through industry-standard Object Linking and Embedding (OLE) automation, which supports full control of data entry, program execution and result retrieval. External programs can be written in Visual Basic®, Visual C++®, FORTRAN, Python® or other languages that support the Microsoft® OLE standard.

## Direct Integration with AxCent®

AxCent can start automatically from within FANPAL, with the initial geometry transferred automatically to AxCent. Changes in AxCent that affect the meanline analysis will cause the meanline analysis to be rerun and all performance maps to be regenerated.

Agile Engineering Design System® Applications

Applications	Software	Radial			Axial		
		Compressors	Pumps	Fans & blowers	Compressors	Pumps	Fans & blowers
Preliminary design	COMPAL®	✓					
	PUMPAL®		✓				
	RITAL™				✓		
	FANPAL™					✓	✓
Detailed design	AXIAL™					✓	✓
	AxCent®	✓	✓	✓	✓	✓	✓
CFD	Pushbutton CFD®	✓	✓	✓	✓	✓	✓
FEA	Pushbutton FEA™	✓	✓	✓	✓	✓	✓
Optimization	TurboOPT II™	✓	✓	✓	✓	✓	✓
CAM	MAX-PAC™	✓	✓	✓	✓	✓	✓



### CORPORATE HEADQUARTERS

217 Billings Farm Road  
 White River Junction, VT 05001-9486 USA  
 Phone (802) 296-2321 • Fax (802) 296-2325  
 E-mail: sales@ConceptsNREC.com  
 Web: www.ConceptsNREC.com

Agile Engineering Design System, AxCent, AXIAL, COMPAL, FANPAL, MAX-PAC, PUMPAL, Pushbutton CFD, Pushbutton FEA, RITAL, and TurboOPT II are registered trademarks or trademarks of Concepts ETI, Inc. Other company, product or service names may be trademarks of their respective owners.

**Concepts NREC design software is compatible with all commercial design packages.**